

UNEN

NIÜBI



ENTRÉE

E01	SESAME PRAWNS TOAST (2 PCS)	10
	芝麻虾多士 (2 件)	
E02	★ LYCHEE CUTTLEFISH BALL WITH KIWI SAUCE	14
	荔枝球配奇异果酱	
E03	CHEESIN' IT BONELESS FRIED CHICKEN	13
	芝士炸鸡	
E04	★ SATAY CHICKEN SKEWER (4 PCS)	16
	沙爹鸡串 (4 串) P	
E05	★ SALT AND PEPPER SQUID 🌶️	17
	椒盐鲜鱿鱼	
E06	VEGETARIAN SPRING ROLLS	10
	斋春卷	
E07	PLAIN ROTI WITH SATAY SAUCE	9
	印度煎饼 (沙爹酱) P	



★ = CHEF'S RECOMMENDATION

ALLERGY INFORMATION

E CONTAINS EGG **P** CONTAINS PEANUTS **D** CONTAINS DAIRY

if you are concerned with allergies to certain ingredients please inform our staff

CRAB

- C01

★

NIUBI SPECIAL LIVE MUD CRAB
SOUP VERMICELLI IN CLAYPOT
金牌游水泥蟹煲 **D**

188
- C02

★

SALTED EGG YOLK LIVE MUD CRAB
黄金游水泥蟹 **E**

188
- C03

★

SINGAPORE CHILLI LIVE MUD CRAB 
星洲游水泥蟹 **E**

188
- C04

X.O SAUCE LIVE MUD CRAB 
X.O酱游水泥蟹

188
- C05

★

GINGER & SPRING ONION LIVE
MUD CRAB
姜葱泥蟹

188
- C06

★

DRIED GARLIC AND CHILLI LIVE
MUD CRAB 
避风塘泥蟹

188
- C07

★

CURRY LIVE MUD CRAB 
咖喱蟹

188
- C08

SINGAPORE BLACK PEPPER
LIVE MUD CRAB 
新加坡黑椒汁蟹

188

 = CHEF'S RECOMMENDATION



SEAFOOD



S05

S05 NIUBI FAMOUS CURRY FISH HEAD 🌶️ 45
咖哩鱼头 (换鱼片 +\$10)
(OPTIONAL: REPLACE FISH HEAD WITH FILLET +\$10)

S06 PRAWNS WITH SINGAPORE CHILLI SAUCE 🌶️ 35
星洲虾球 ⑤

S07 ★ PRAWNS WITH WASABI SAUCE 🌶️ 35
(NO SHELL)
芥末虾球

S08 ★ SALTED EGG YOLK KING PRAWNS (HAS SHELL) 48
黄金虾碌 ⑤

S09 ★ SIGNATURE KING PRAWN CLAYPOT WITH BROAD VERMECELLI ^{2322.25 px} 48
蟹粉虾碌米线煲 ⑩

S10 ASIAN BUTTERMILK KING PRAWNS CLAYPOT WITH BROAD VERMECELLI 🌶️ 45
葡式虾碌米线煲 ⑩

S01 GOLDEN FRAGRANT PIPI (KUM HEONG) 🌶️ 33
甘香炒蚬

S02 PIPI WITH X.O SAUCE 🌶️ 33
X.O酱炒蚬

S03 PIPI WITH GARLIC AND BUTTER SAUCE 33
蒜蓉牛油炒蚬

S04 PIPI WITH SINGAPORE CHILLI 🌶️ 32
星洲炒蚬 ⑤



S09

S02



★ = CHEF'S RECOMMENDATION

SEAFOOD



- S11

★

DEEP FRIED BARRAMUNDI FILLETS
WITH TAMARIND SAUCE
酸子酱酥炸盲曹

38
- S12

★

STEAMED BARRAMUNDI FILLETS
WITH SPICY TRUFFLE SAUCE 🌶️
剁椒黑松露蒸盲曹柳

39
- S13

STEAMED BARRAMUNDI FILLETS
WITH GINGER AND SHALLOTS
清蒸盲曹

34
- S14

STIR-FRIED JAPANESE SCALLOPS &
MIXED MUSHROOMS IN XO SAUCE 🌶️
XO鲜菌日本带子

48
- S15

STIR-FRIED JAPANESE SCALLOPS & MIXED
MUSHROOMS IN BLACK TRUFFLE SAUCE
黑松露鲜菌日本带子

48
- S16

SNAKEHEAD FILLET IN BITTER
MELON SOUP
凉瓜乌鱼汤煲

30
- S17

STIR-FRIED SNAKEHEAD FISH FILLET &
MIXED MUSHROOMS IN XO SAUCE 🌶️
XO鲜菌乌鱼片

38
- S18

STIR-FRIED SNAKEHEAD FISH FILLET & MIXED
MUSHROOMS IN BLACK TRUFFLE SAUCE
黑松露鲜菌乌鱼片

38
- S19

ROCKLING FISH HEAD STEW WITH
PRESERVED VEGETABLES
潮州鱼头

45

★ = CHEF'S RECOMMENDATION

ALLERGY INFORMATION

E CONTAINS EGG **P** CONTAINS PEANUTS **D** CONTAINS DAIRY

if you are concerned with allergies to certain ingredients please inform our staff

MEAT & POULTRY

M01	HAINANESE BONELESS CHICKEN 海南鸡	28
M02	★ HOUSE SIGNATURE GARLIC BLACK ROAST PORK 🌶️ 招牌黑油烧肉	35
M03	CURRY CHICKEN 🌶️ 咖喱鸡	26
M04	FRIED CHICKEN WITH SALTED EGG YOLKS 黄金鸡扒 E	35
M05	★ FRIED CHICKEN WITH SALT & PEPPER 🌶️ 椒盐鸡扒	30
M06	★ CHICKEN IN CHINESE WINE SAUCE 🌶️ 三杯鸡煲	32
M07	BRAISED EGGPLANT & MINCE PORK IN CLAYPOT 🌶️ 魚香茄子煲 (OPTIONAL: WITH OR WITHOUT SALTED FISH)	26
M08	★ DEEP FRIED PORK RIBS WITH DRIED TANGERINE 酥炸陈皮骨	30
M09	BRAISED BEEF BRISKET 萝卜牛腩	32
M10	BEEF WITH HONEY PEPPER 🌶️ 蜜椒牛肉	30
M11	BEEF WITH OYSTER SAUCE 蚝皇牛肉	30



★ = CHEF'S RECOMMENDATION

ALLERGY INFORMATION

E CONTAINS EGG

P CONTAINS PEANUTS

D CONTAINS DAIRY

if you are concerned with allergies to certain ingredients please inform our staff

GREENS



V02

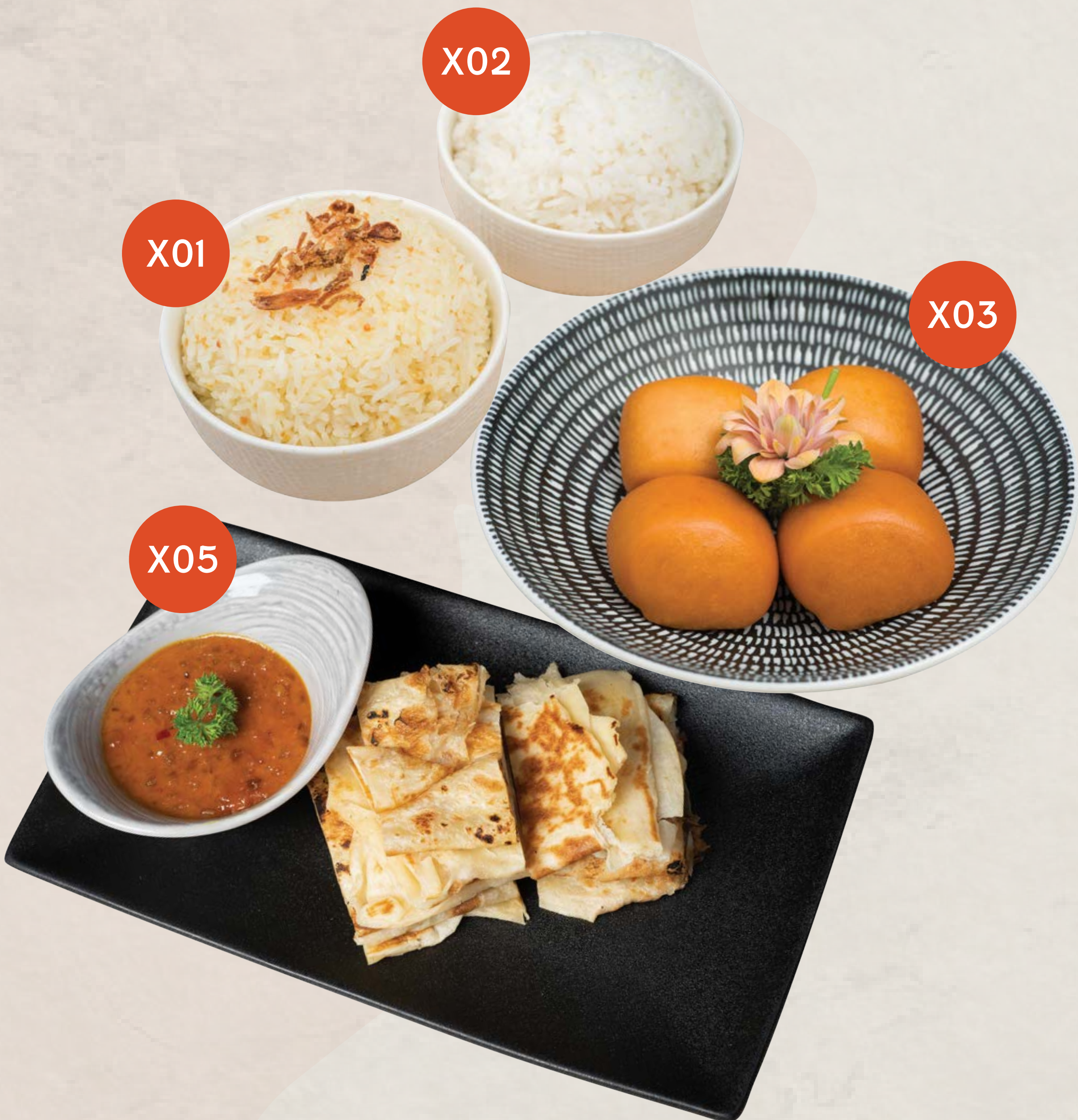
V01

★ = CHEF'S RECOMMENDATION

V01	★	HOMEMADE TOFU WITH FRESH MUSHROOMS	30
		杂菌扒家乡豆腐 E	
V02	★	HOMEMADE TOFU IN EGG WHITE GRAVY	33
		蟹肉鱼翅扒家乡豆腐 E	
V03		STIR FRY ORGANIC CAULILINI WITH BLACK GARLIC	30
		黑蒜炒有机松花菜	
V04		STIR FRY MIXED VEGETABLES	28
		炒什菜	
V05		GREENS OF THE DAY	28
		炒时菜	
		SIMPLE STIR FRY	
		清炒	
		STIR FRIED WITH OYSTER SAUCE	
		耗油炒	
		STIR FRIED WITH BLACK GARLIC	
		黑蒜炒	
		STIR FRIED WITH GARLIC & CHILLI	
		蒜蓉辣椒	

EXTRAS

X01	CHICKEN FRAGRANT RICE	4.5
	油鸡饭	
X02	STEAM RICE	3.5
	白饭	
X03	FRIED MANTOU	6.5
	炸馒头	
X04	CHINESE DOUGHNUT	6
	炸油条	
X05	PLAIN ROTI	7
	印度煎饼	
X06	BROAD VERMICELLI	5
	米线	



X02

X01

X03

X05

DESSERT

- D01

★

FRIED MUSANG KING DURIAN
WITH ICE CREAM
炸猫山王榴莲配雪糕 **D**

24
- D02

★

RED BEAN PAN CAKE WITH
ICE CREAM
豆沙锅饼配雪糕 **D**

14
- D03

★

FRESH WHOLE COCONUT PUDDING
椰子果冻

16
- D04

OSMANTHUS JELLY WITH
BROWN SUGAR
红糖桂花冰粉

6
- D05

DEEP FRIED VANILLA ICE CREAM
炸雪糕 **D**

16
- D06

BROWN SUGAR GLUTINOUS
RICE CAKE
红糖糍粑

10



★ = CHEF'S RECOMMENDATION

ALLERGY INFORMATION

E CONTAINS EGG **P** CONTAINS PEANUTS **D** CONTAINS DAIRY

if you are concerned with allergies to certain ingredients please inform our staff

GO SOLO

G01 ★ NIUBI'S FAMOUS CURRY LAKSA NOODLES 🌶️
招牌咖喱叻沙面

- G01A SEAFOOD 24
海鲜
- G01B FISH HEAD 19
鱼头 (换鱼片 +\$2)
(OPTIONAL: REPLACE FISH HEAD WITH FILLET +\$2)
- G01C SLOW COOKED CHICKEN 19
鸡
- G01D BEEF 19
牛肉
- G01E COMBINATION 19
杂烩
- G01F VEGETARIAN 19
蔬菜

G02 FISH HEAD AND PICKLED
MUSTARD SOUP VERMECELLI 19
咸菜鱼头米粉 (换鱼片 +\$2) ⓓ
(OPTIONAL: REPLACE FISH HEAD WITH FILLET +\$2)

G03 BRAISED BEEF BRISKET ON DRY
NOODLES / SOUP NOODLES / RICE 19
牛腩干捞面 / 汤面 / 饭



G04 ★ CHAR KUEY TEOW 🌶️ 19
炒粿条 ⓔ

G05 ★ STIR FRIED SEAFOOD RICE NOODLES 24
IN EGG WHITE GRAVY SAUCE
海鲜滑蛋河 ⓔ



★ = CHEF'S RECOMMENDATION

GO SOLO



G06	HAINANESE BONELESS CHICKEN RICE 海南鸡饭	19	G09	SIGNATURE GARLIC BLACK ROAST PORK ON DRY NOODLES / RICE 🌶️ 招牌黑油烧肉干捞面 / 饭	20
G07	FRIED RICE WITH CRAB MEAT AND BLACK TRUFFLE SAUCE 蟹肉黑松露炒饭 E	35	G10	SEAFOOD FRIED RICE WITH X.O SAUCE 🌶️ X.O酱海鲜炒饭 E	28
G08	FRIED RICE WITH PRAWNS & CHINESE SAUSAGE 鲜虾腊肠炒饭 E	19	G11	VEGETARIAN FRIED RICE 斋炒饭 E	18

★ = CHEF'S RECOMMENDATION

ALLERGY INFORMATION

E CONTAINS EGG **P** CONTAINS PEANUTS **D** CONTAINS DAIRY

if you are concerned with allergies to certain ingredients please inform our staff

DRINKS

NON-ALCOHOLIC

NEW DRINKS

		HOT	COLD
N01	KOPI 	5.5	6
N02	KOPI-O	5.5	6
N03	MILO 	5.5	6
N04	 MILO MILK DINOSAUR 		6.5
N05	 PANDAN COCONUT MILK		9
N06	 PURPLE SWEET POTATO WITH MILK 		9
N07	 DURIAN MILK		9



SOFT DRINKS

N08	COKE	5.5
N09	COKE ZERO	5.5
N10	SPRITE	5.5
N11	SPARKLING WATER	5.5
N12	LEMON LIME BITTERS	5.5

 = CHEF'S RECOMMENDATION

DRINKS

NON-ALCOHOLIC



N16

HOUSE SPECIALS

N15	★ MATCHA COCONUT	9
N16	★ TEDDY BEAR MILK TEA D	9
N17	★ JUMBO PAIR BEAR MILK TEA D	16
N18	STRAWBERRY YAKULT	9
N19	WATERMELON YAKULT	9



N17

N13

TEA

N13	ICED LEMON TEA	6
N14	CHINESE TEA	3

★ = CHEF'S RECOMMENDATION

ALLERGY INFORMATION

D CONTAINS DAIRY

if you are concerned with allergies to certain ingredients please inform our staff

DRINKS

ALCOHOLIC

COCKTAILS

A01	MOJITO	16
	RUM, TONIC & MINT	
A02	★ YUZU SUNRISE	16
	YUZU, GIN & TONIC	
A03	TROPICAL SLING	17
	COINTREAU, TEQUILA	
A04	GOLDEN FEVER	19
	GIN, PASSIONFRUIT, PINEAPPLE JUICE	
A05	LONG ISLAND	19
	VODKA, RUM, TEQUILA, GIN, LEMON & COLA	



A06	PIÑA COLADA	19
	PINEAPPLE JUICE, RUM & COCONUT MILK	
A07	LYCHEE MOJITO	16
	LYCHEE JUICE, RUM, TONIC, LIME & MINT	
A08	★ YAKULT MARTINI	19
	YAKULT & VODKA	

★ = CHEF'S RECOMMENDATION

DRINKS

ALCOHOLIC

WINES

		GLASS	BOTTLE
W01	STONELEIGH SAUVIGNON BLANC	10	38
W02	ELEPHANT IN THE ROOM SHIRAZ	10	38
W03	CORKAGE		10

BEER

B01	TSINGTAO	9
B02	ASAHI	9
B03	FURPHY	9
B04	TIGER	9

SPIRIT

H01	CIN - CORDON'S Optional: Add coke / sprite / mineral water / tonic	10
H02	BOURBON - JIM BEAN Optional: Add coke / sprite / mineral water / tonic	10
H03	SCOTCH WHISKY - BLACK LABEL Optional: Add coke / sprite / mineral water / tonic	10
H04	TEQUILA - SIERRA SILVER Optional: Add coke / sprite / mineral water / tonic	10
H05	VODKA - ABSOLUT Optional: Add coke / sprite / mineral water / tonic	10